

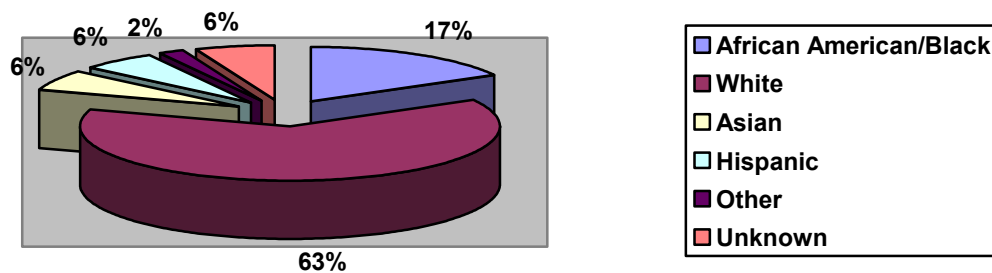
**MVLE FY 2005**  
**Program Evaluation Report**

Demographic Data

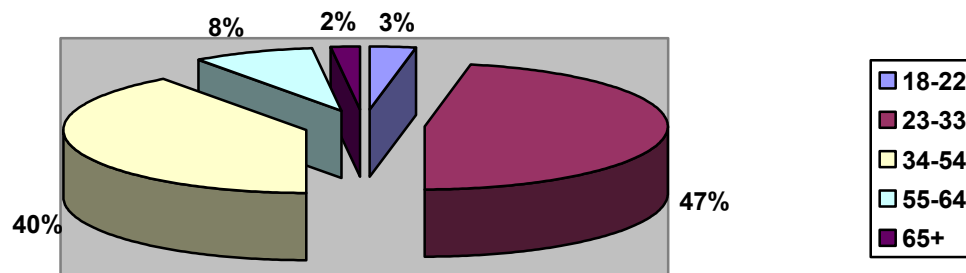
During the timeframe of July 1, 2004 – June 30, 2005 MVLE served a total of 454 individuals with disabilities. Of the 452 served, 422 are currently enrolled, 16 received situational assessments and did not enroll, and 16 have been discharged. MVLE has a 93% retention rate for individuals receiving services.

MVLE continues to serve a diverse and changing population. Programs and services created need to continue to keep diverse demographic factors in mind. In FY 2005 there have been no changes in the racial diversity or age of the individuals MVLE served. There have been changes in gender, type of disability, and level of mental retardation.

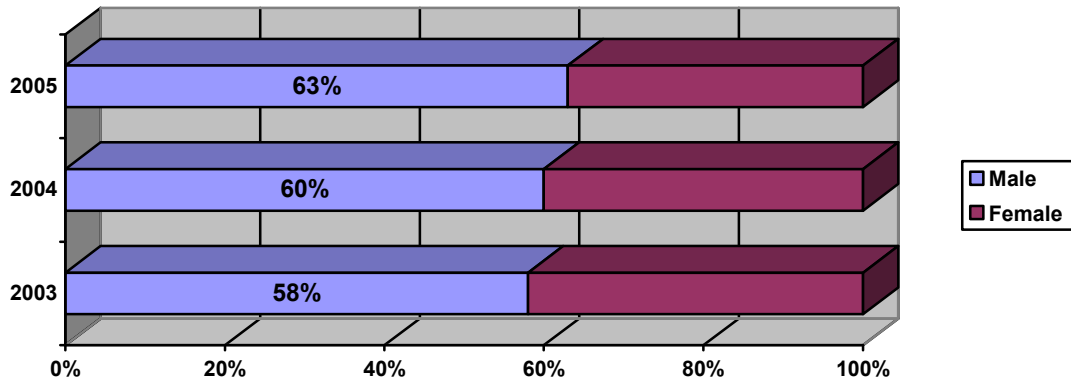
Ethnic/Racial diversity of individuals served:



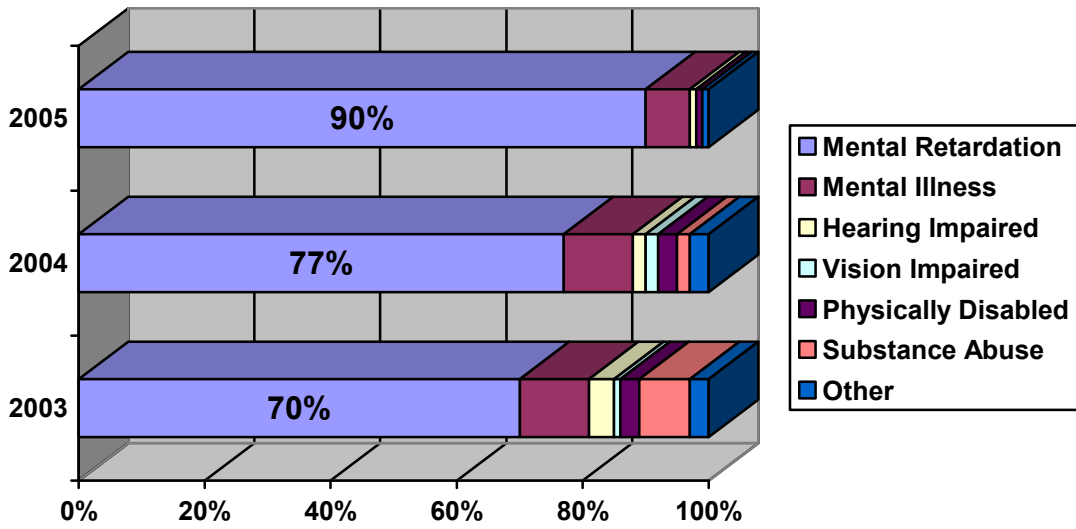
Age ranges of individuals served:



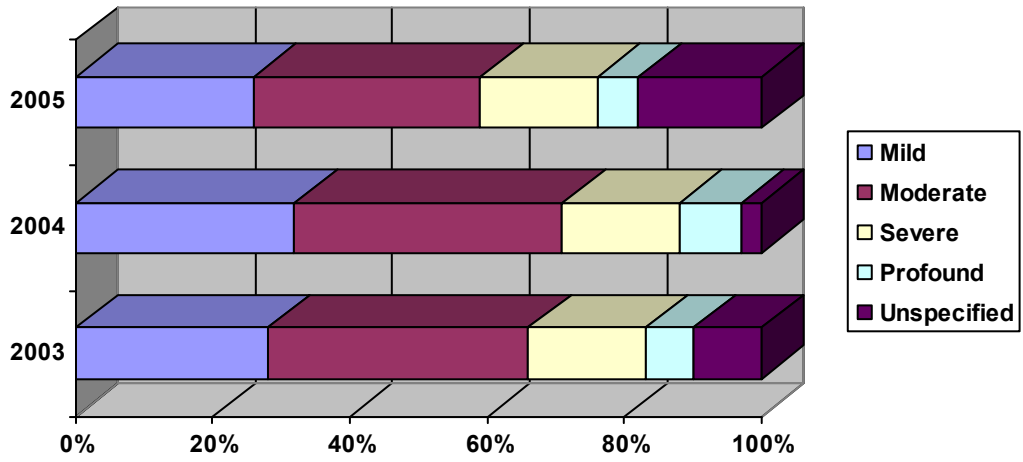
Gender of individuals served:



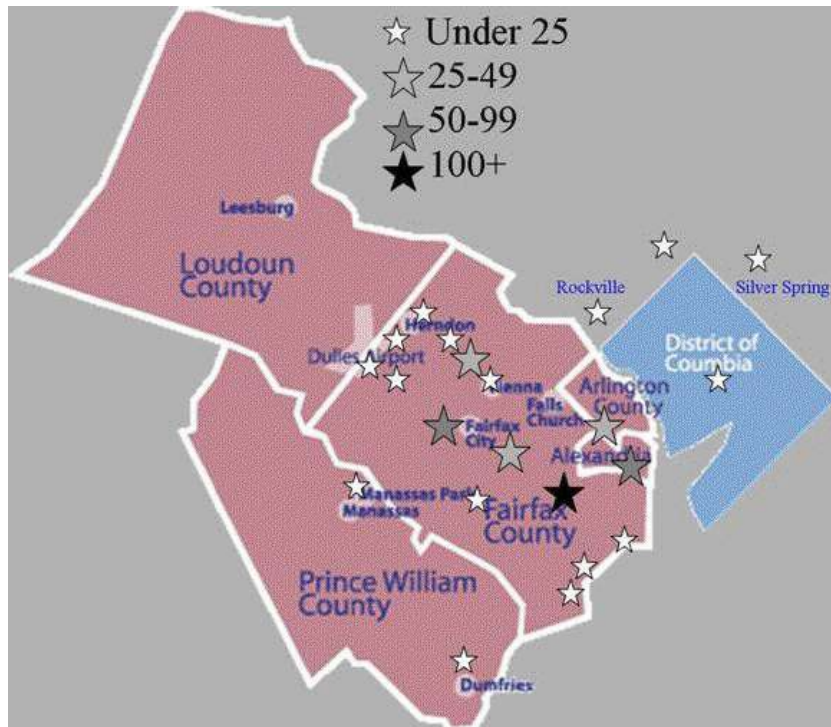
Primary Diagnosis of individuals:



Of those with Mental Retardation as their primary diagnosis:



Individuals served by city/county of residence:



### Program Outcomes Measures

In review of the FY 2005 Outcome Measure Report all programs achieved expected results.

	Average Yearly Wage per Person	Average Hours Worked Every Two Weeks	Average Hourly Wage
Organizational Employment Services: Production	\$611	16	\$1.39
Organizational Employment Services: Community Access	\$932	20	\$1.77
Community Employment Services	\$2,658	38	\$2.72
Individual Supported Employment	\$13,309	56	\$8.88
NISH (government contracts)	\$13,650	36	\$12.19
<b>MVLE averages for all individuals in all programs</b>	<b>\$6,689</b>	<b>26</b>	<b>\$5.56</b>

Every person in MVLE's programs has personal goals they are working to accomplish. Each individual has an Individual Service Plan (ISP) that outlines these goals. MVLE staff work with the individual to complete these goals and report their success quarterly. The individuals in MVLE programs averaged a successful completion rate of 60% of their ISP goals.

### Satisfaction Survey Results

MVLE staff attempted to conduct face-to-face interviews with 737 stakeholder, including the individuals receiving services, employees, board members, guardians of individuals receiving services, employers, business partners, case managers, and government partners. Of the 737 attempted, we were successful in interviewing 527 which represents 72% of our stakeholders.

Survey results were very positive and support the changes/improvements that have been made at MVLE over the past year. Overall stakeholder satisfaction with MVLE services was 94%.