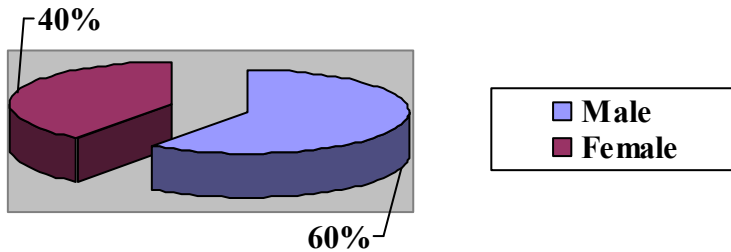


MVLE FY 2004 Program Evaluation Report

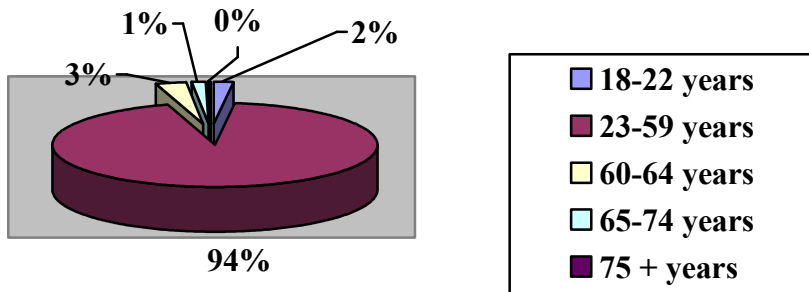
This report summarizes the results obtained through MVLE's FY 2004 Outcomes Measurement reporting process. It contains an overview of program demographics and objectives.

MVLE served a total of 459 Individuals in FY 2004. Of the 459 individuals served, 426 are currently enrolled in MVLE programs. The remaining 33 individuals either received situational assessments and did not enter MVLE's programs or have discharged during the course of the year. MVLE's retention rate during FY 2004 was 93%.

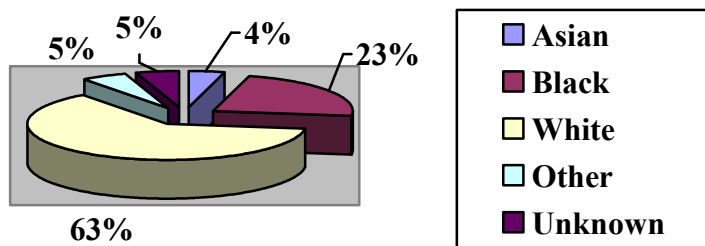
Gender of individuals in MVLE programs



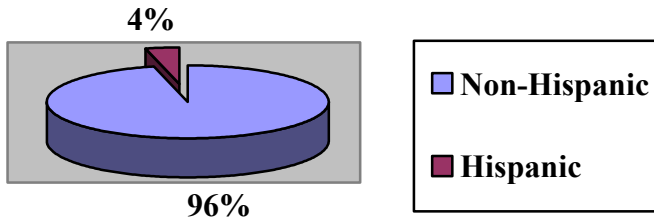
Age ranges of individuals in MVLE programs



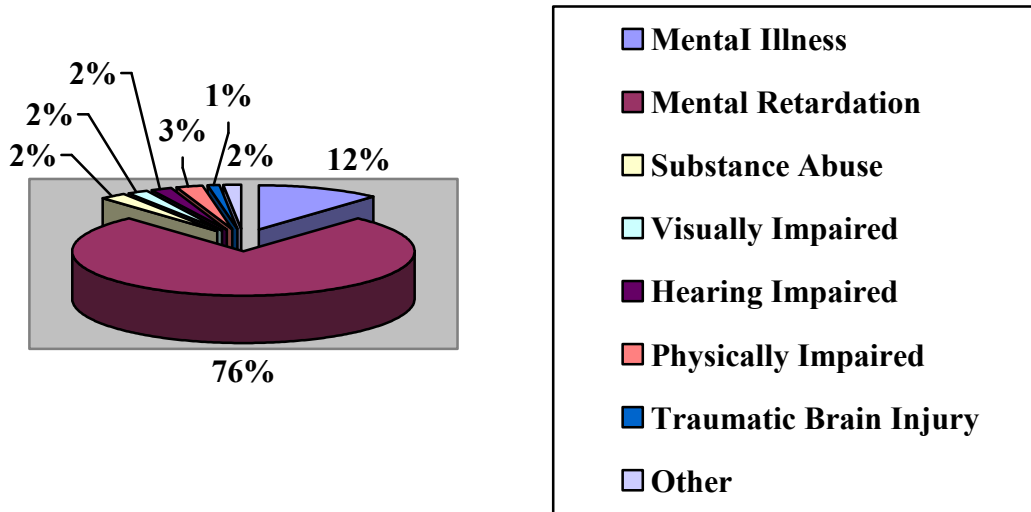
Racial background of individuals in MVLE programs



Hispanic origin of individuals in MVLE programs



Primary Diagnosis of individuals in MVLE programs



Summary of demographic findings

There was an increase in the number of clients served from 342 in FY 2003 to 426 clients in FY 2004. The demographic data compiled for FY 2004 indicates no significant changes in age, race, or ethnicity.

The primary disability of the individuals served in MVLE programs has changed. Individual Supported Employment has marked significant changes in individuals with Mental Illness (which increased 12%), Substance abuse (which decreased 13%), and hearing impairment (which increased 6%). Agency wide the percent of individuals with Mental Retardation has also increased.

Departmental Wage and Hour data

Department	Average Yearly Wages per Person	Average Hours Worked per Year	Average Hours Worked Every Two Weeks	Average Hourly Wage
Organizational Employment Services: Production	\$433	254	10	\$1.45
Organizational Employment Services: Community Access	\$662	378	15	\$1.56
Community Employment Services	\$2,604	961	37	\$2.69
Individual Supported Employment	\$14,626	1,664	64	\$8.79
NISH (government contacts)	\$18,652	1,768	68	\$10.55
MVLE average for all individual served in all programs	\$5,110	922	35	\$4.17

Average Yearly Wages Increased in three departments:

Organizational Employment Services: Community Access:	\$609 to \$662 (\$53 increase)
Community Employment Services:	\$2,598 to \$2,604 (\$6 increase)
Individual Supported Employment:	\$12,733 to \$14,626 (\$1,893 increase)

Average Hours Worked Increased in three departments:

Organizational Employment Services: Production:	8 to 10 (bi-weekly)
Organizational Employment Services: Community Access:	14 to 15 (bi-weekly)
Individual Supported Employment:	58 to 64 (bi-weekly)

Average Hourly Wage Increased in three departments:

Community Employment Services:	\$2.66 to \$2.69 (3 cent increase)
Individual Supported Employment:	\$8.34 to \$8.79 (45 cent increase)
NISH:	\$10.33 to \$10.55 (22 cent increase)

FY 2004 Strategic Departmental Goals

